

- Unique roll up operation
- Several different mounting options allow for easy out of the way placement
- Rolls up quickly and safely out of the way requiring little storage space

The innovative Zip-Pull™ roll-up safety curtain features a fast-action pull-down and fast-action wind-up system. Milwaukee Protective Covers applies our unique Zip-Pull™ retracting cord with handle to a rugged industrial roll-up curtain. To unwind -- you pull the curtain down into position. To retract you simply grab the Zip-Pull™ cord with handle and pull. The curtain quickly rewinds and the cord disappears back into its housing.

The Zip-Pull™ curtain is ideal when you need to quickly close or shield a welding booth. It appears quickly and disappears even faster! Whether your plant is a production welding floor, job shop, or an occasional welding area, the Zip-Pull™ safety curtain is ideal. We have a wide variety of optional mounting systems to make your installation even easier: hanging chains, wall brackets, or support posts with pedestal.

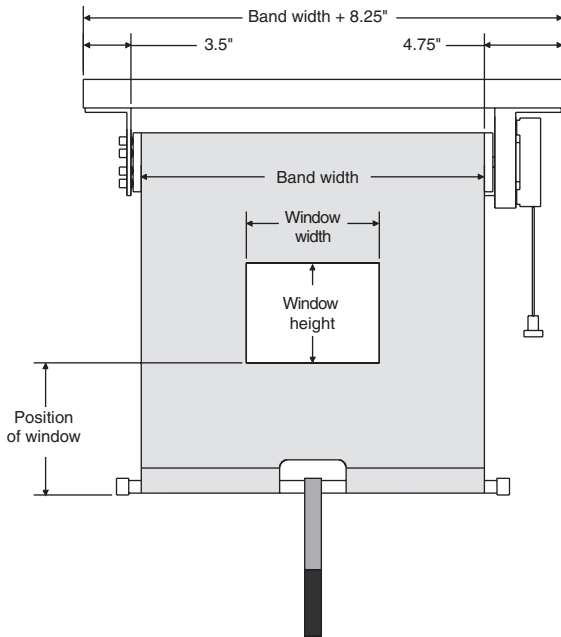
The reliable Zip-Pull™ curtain is manufactured of all metal components using an engineered design. Standard sizes are available with quick delivery. Or, we can manufacture a custom unit to fit your exact needs. Call for more information! Patent pending.

Standard Specifications

- | | |
|--------------------------|---------------------------------------------------------------------------------------------------------------------------------------------|
| Operation: | Operator can manually lower the curtain with a simple pull down motion. The curtain can be easily retracted by pulling the Zip-Pull™ handle |
| Mounting: | Standard mounting brackets available for easy mounting. Swivel style mounting options also available. Consult MPC for details |
| Curtain Material: | Various materials available. Consult MPC about your application. Reference Bulletin #260. |
| Sizes: | Standard sizes for quick delivery. Custom dimensions available to meet your needs |
| Window: | Optional safety window provides a safe view of the work cell |

Quotation Request

Company Name: _____ Date: _____
 Address: _____ Contact Person: _____
 City: _____ State: _____ Phone: _____
 Zip: _____ Fax: _____

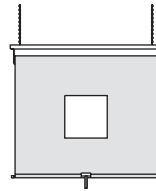


Window Options

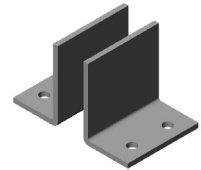
- Curtain window:
- Standard window: 2' x 2' Centered on band
- Custom window:
 Position of window: height _____ (inch)
 Window width _____ (inch)
 Window height _____ (inch)
 Window fabric:
- 14 mil Blue (MPC material code WC30)
- 14 mil Red (MPC material code WC31)
- 14 mil Dark Green (MPC material code WC32)
- 14 mil Yellow (MPC material code WC33)
- 14 mil Gray (MPC material code WC34)
- 40 mil Orange (MPC material code WC40)

Mounting Options

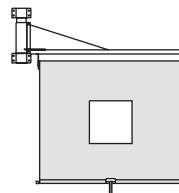
Chain or Cable



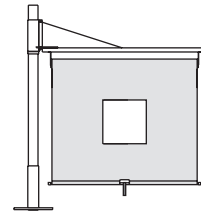
Standard Mounting Brackets



Wall Mounted Swivel



Pedestal Mounted Swivel



Order Specifications

- Standard width: 3 FT 4 FT 6 FT 8 FT
 Custom band width: _____ (inch)
 Standard height: 4 FT 6 FT 8 FT
 Custom band height: _____ (inch)
 Band material options:
 WC10 WC11 WC12 WC13 WC14
 WC15 WC16 WC30 WC31
 WC32 WC33 WC34 WC40

Reference Bulletin #260 for material descriptions and other available materials.

Mounting Options

- Mounting Brackets
- Wall Mounted Swivel
- Pedestal Mounted Swivel
 - 8 FT Tall 10 FT Tall 12 FT Tall
- Chain or Cable Hung (Supplied by Others)

Special Requirements and Notes:



MPC warranty is for the value of our products only. MPC is not liable for incidental or consequential damages. Specifications are subject to change, please request approval drawings if needed. Customers must use safe design practices and install MPC products according to applicable OSHA regulations. Customer is responsible to verify all safety aspects of product usage. MPC makes no claims regarding the merchantability or fitness of use. No employee of MPC is authorized to modify this warranty. ©Copyright 2000 Milwaukee Protective Covers.

3811 N. Holton Street • Milwaukee, WI 53212 • Phone 414-906-4000 • FAX 414-906-4100 • www.MPCcovers.com